



## 9330 Nesbit Ferry, Alpharetta, GA 30022

### School & Daycare Property

+/- 8,600 SF • Parcel: +/- 2.43 acres • Parking: 29 Spaces



- Formerly Nesbit Ferry Montessori School
- 6 Classrooms
- 2 Recreation areas
- Full certified kitchen
- Gardens, admin offices & much more
- Access control system
- Large wooded lot
- Traffic court on Nesbit Ferry= +/-19,000 vehicles per day
- Median HH Income: \$76,400 (5 mile radius)
- 9.29% Population growth forecasted by 2020



[www.atlantaleasing.com/9330Nesbit](http://www.atlantaleasing.com/9330Nesbit)

**DAVID W. AYNES**  
404-348-4448  
david@atlantaleasing.com



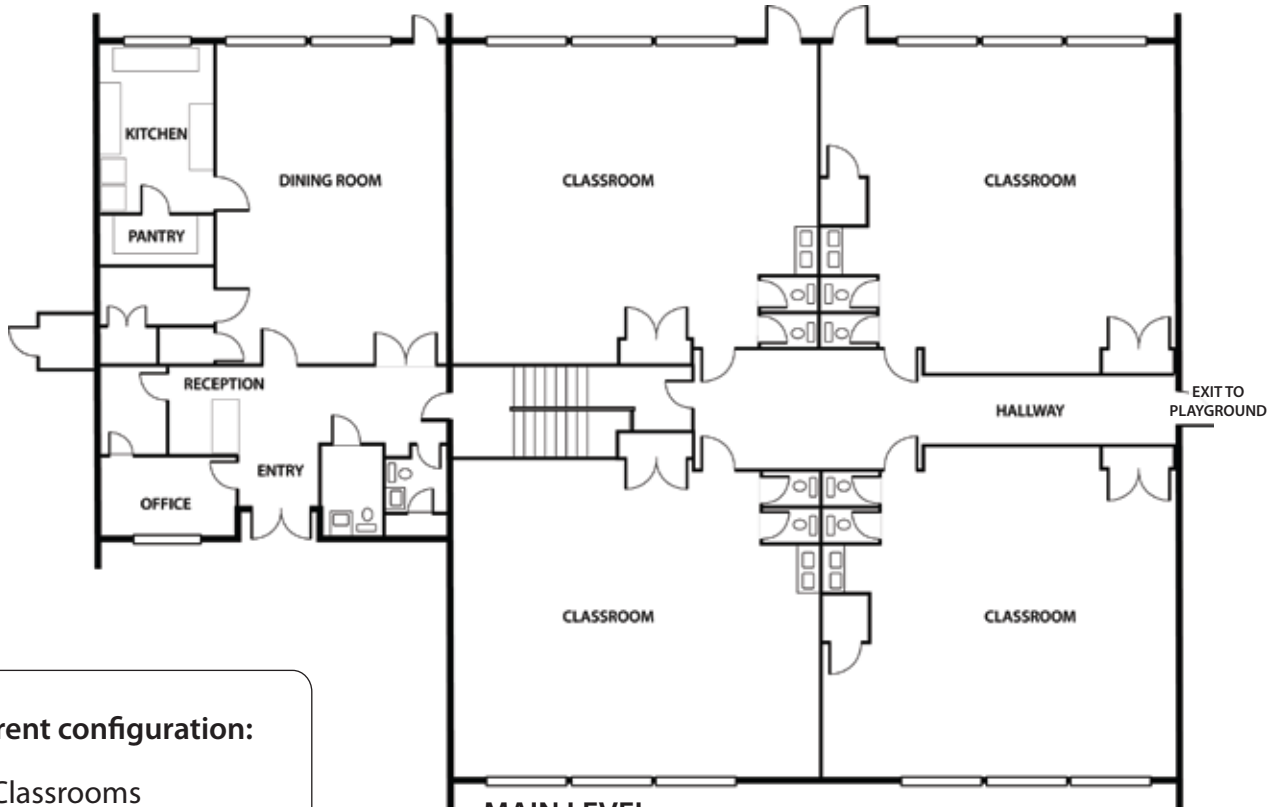
**ATLANTA LEASING  
& INVESTMENT**



# 9330 Nesbit Ferry, Alpharetta, GA 30022

## School & Daycare Property

+/- 8,600 SF • Parcel: +/- 2.43 acres • Parking: 29 Spaces

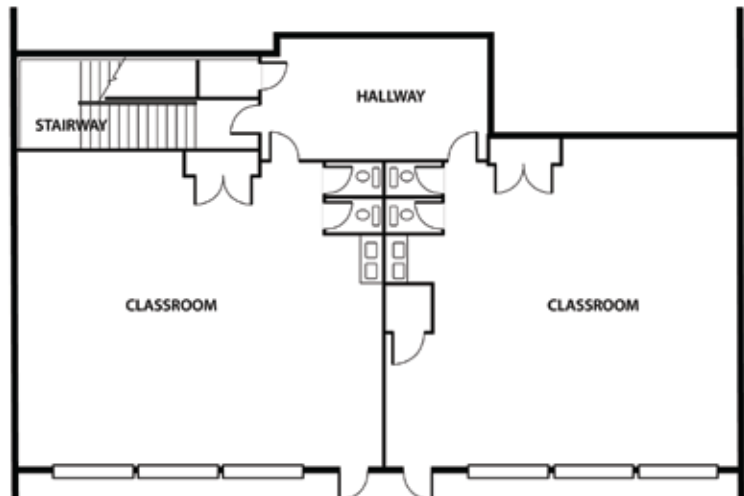


MAIN LEVEL

### Current configuration:

- 6 Classrooms
- 14 Restrooms
- 9 Storage rooms
- Full kitchen
- Entry/reception area
- Admin offices
- 2 Recreation areas

All information contained herein is believed to be accurate but is not warranted.



LOWER LEVEL

EXITS TO PLAYGROUND



**DAVID W. AYNES**

404-348-4448

david@atlantaleasing.com

**ATLANTA LEASING  
& INVESTMENT**